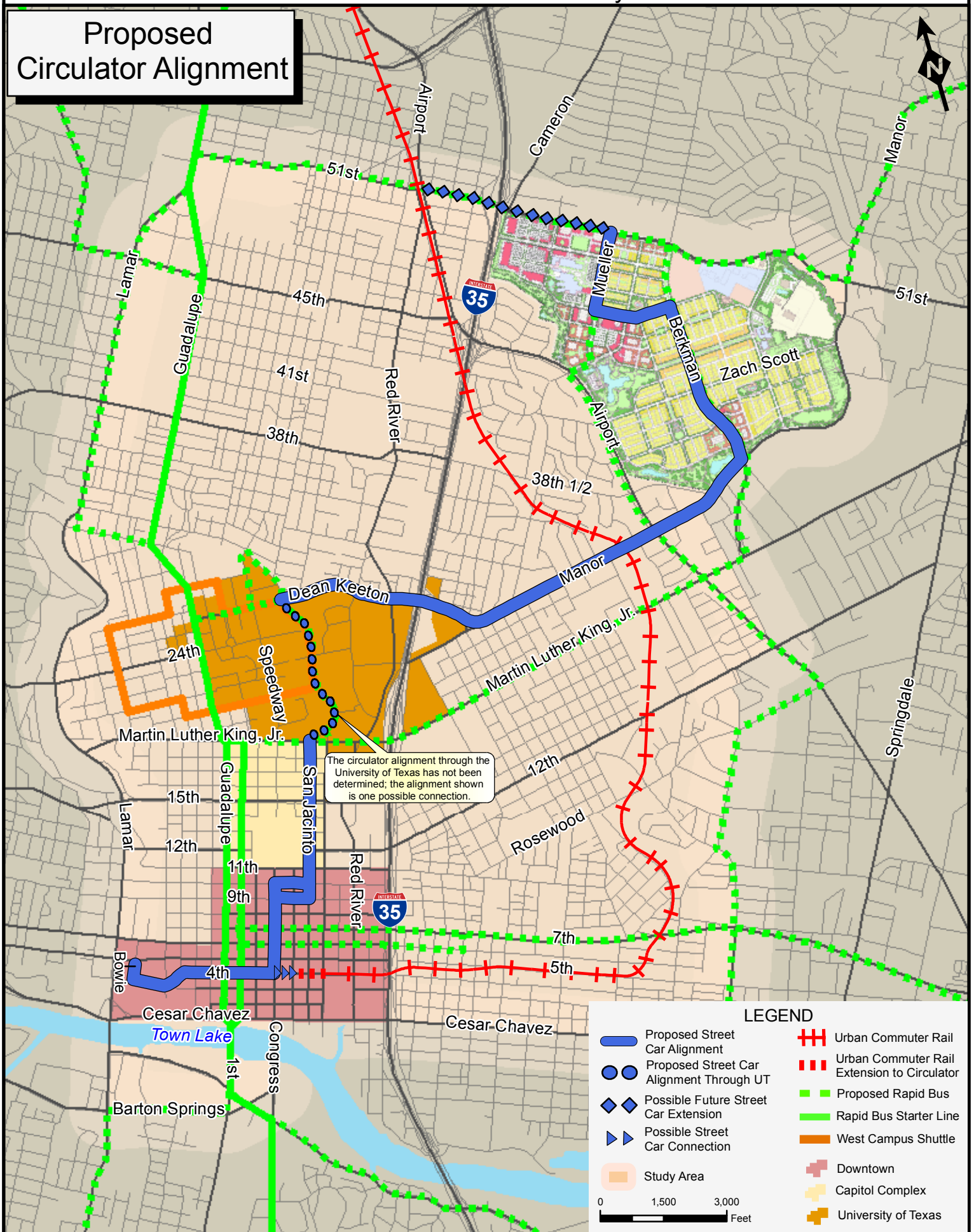


Proposed Circulator Alignment



The circulator alignment through the University of Texas has not been determined; the alignment shown is one possible connection.

LEGEND

- Proposed Street Car Alignment
- Proposed Street Car Alignment Through UT
- Possible Future Street Car Extension
- Possible Street Car Connection
- Study Area
- Urban Commuter Rail
- Urban Commuter Rail Extension to Circulator
- Proposed Rapid Bus
- Rapid Bus Starter Line
- West Campus Shuttle
- Downtown
- Capitol Complex
- University of Texas

0 1,500 3,000 Feet